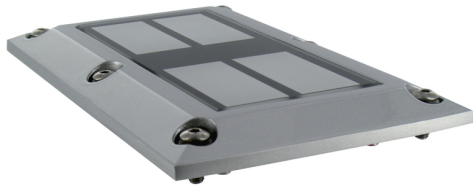
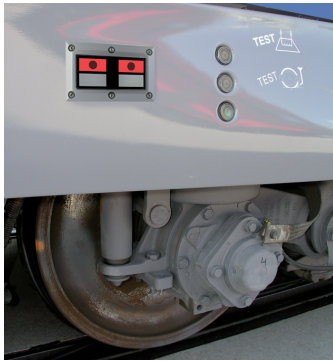




MAFELEC

Creating control and signalling solutions for harsh environments

Status of Brake Indicators



Luminous indicator system of boggie of brake status

- Red light: brake applied
- Green light: brake released

- **Tempered-glass protective glass**
- **Screen printing on request**
- **IP66 IK06**
- **Reliability**
- **Mismatch protection color blindness**
- **Adaptations available on request**

Standards:

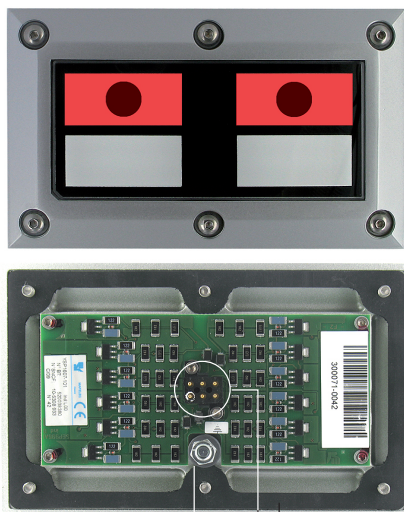
- **Application** EN 50155
- **Shocks, vibrations** EN 61373
- **EMC** EN 50121
- **Environment** EN 60068
- **Fire and smoke** EN 45545

Mechanical characteristics:

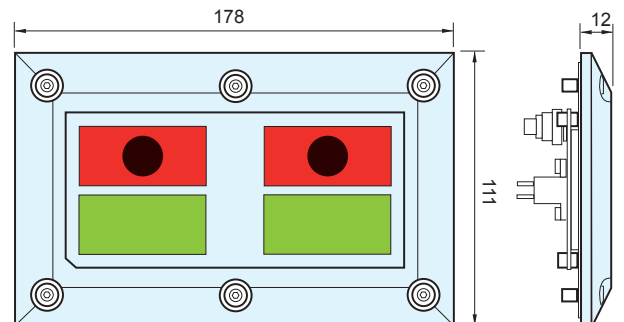
- Operating temperature: -25 °C / + 70 °C
- Very light tempered-glass protective glass of 5 mm
- 4 layer screen printing
- Aluminium body
- Paint 4 layers according to NFF 19141-2
- Protection: IP66 - IK06 in front panel
- Service life: >100 000 h

Electrical characteristics:

- 4 indicator lights (2 x 24 red LED and 2 x 24 green LED)
- Supply voltage: 72 V, 35 mA per indicator light
- Security:
Each indicator light is made up of three branches of LED in parallel
- Reliability:
Current limitation at 10 mA per branch
- Plug by connector



Gasket
Output 6-pin connector



AEROSPACE & DEFENCE



COACHES & BUSES



RAILWAY



INDUSTRY



ENERGY



PLEASURE BOAT



VERTICAL TRANSPORT



INDUSTRIAL VEHICLES



OFFSHORE & MINING

MAFELEC
www.mafelec.com

Textes et images non contractuels

(update 2017/06)



MAFELEC

Creating control and signalling solutions for harsh environments

Status of Brake Indicators

Luminous indicator system of boggie of brake status

- Red light: brake applied
- Green light: brake released



- **Screen printing on request**
- **IP66 IK08**
- **Reliability**
- **Mismatch protection color blindness**
- **Adaptations available on request**

Standards:

- **Application** EN 50155
- **Shocks, vibrations** EN 61373
- **EMC** EN 50121
- **Environment** EN 60068
- **Fire and smoke** EN 45545
- **Salt fog** EN50155
96h ST4 class
- **Paint 4 layers** NFF 19141-2

Mechanical characteristics:

- Operating temperature: -25 °C / + 70 °C
- Aluminium body
- Protection: IP66 - IK08 in front panel
- Reliability: 1000 000 h
- Polycarbonate protective glass, layer screen printing

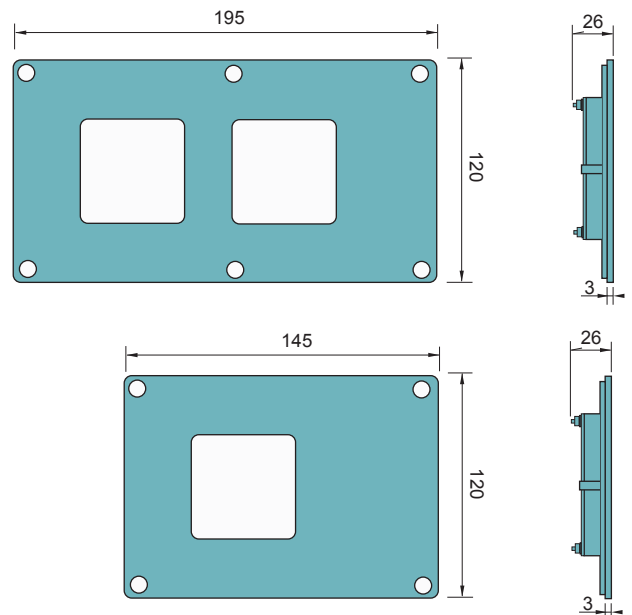
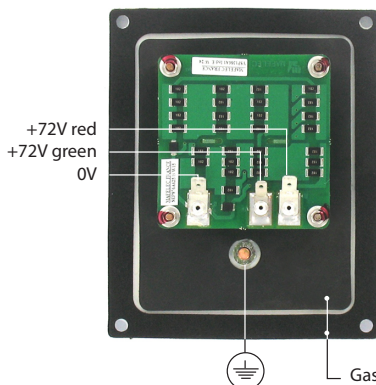
Electrical characteristics:

- 1 or 2 indicator lights red / Green
- Red: 3 branches of 8 LED in parallel (42mA à 72VDC)
- Green: 3 branches of 6 LED in parallel (55mA à 72VDC)
- Connection by :
 - 1 Simple Faston 5 x 0.8 mm, 45 °, tinned. (+72V green)
 - 1 Simple Faston 6.35 x 0.8 mm, 45 °, tinned. (+72V red)
 - 1 Simple Faston 6.35 x 0.8 mm, 45 °, tinned. (0V)

Mounting :

Recommandation: M5 stainless steel screws and oleo-leaktight liquid.

Example: 1 indicator



AEROSPACE & DEFENCE



COACHES & BUSES



RAILWAY



INDUSTRY



ENERGY



PLEASURE BOAT



VERTICAL TRANSPORT



INDUSTRIAL VEHICLES



OFFSHORE & MINING

MAFELEC
www.mafelec.com

Textes et images non contractuels

(update 2017/11)