

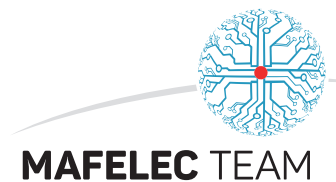


# M-CHARGE

The highest reliable and robust solution  
to recharge electronic devices !



Sustainable solutions to move  
people in a better planet



## M-USB Converter

- 100-230 VAC / 1 Output 5 VDC / 2,4A
- 24-36 VDC / 2 Output 5 VDC / 2,4A
- 72-110VDC / 2 Output 5 VDC / 2,4A
- Galvanic Insulation
- Electrical efficiency > 0,83
- MTBF > 500 000 hours
- IP20
- Inter connection of converters
  - Cage clamp connection
  - EN50155, EN45545-2, EN61373



## M-USB Socket

### Main features

- Single or double USB 3.0 ports type A or C
- 0.5A to 2.4A per port
- Socket inter connection configurable with M-USB converters
- -25°C/+55°C operating temperature
- MTBF > 1.5 Million hours
- 5 000 insertion/extraction
- IP20, IK07
- Marking customization
- Backlit option
- EN50155, EN45545-2, EN61373, EN62684, EN62680-3, EN62680-4

## M-USB Socket

### Housing types

#### M-Door slim

- Vertical removable block orientation
- Cable output with customized connector
- Housing color customization
- Inter connection of socket



Panel Mounting

#### Pole Mounting

- ø30mm - ø35mm
- Pole adapter color customization



#### Rear mounting

- Vertical or horizontal removable block orientation
- Inter connection of socket
- Cage clamp connection
- Very compact fitting



## M-Door Power socket 230Vac

### Main features

- French Type E (NFC61-314) or German Type F (DIN49440-1)
- High insertion/extraction endurance of 50 000 cycles
- Children protection
- Inter connection of power sockets
- IP40 Front, IP20 rear (Increased IP option)
- IK07
- Socket background color and marking customization
- Backlit option
- EN60884-1, EN50124, EN45545-2, EN50155, EN61373



## M-Door Power socket 230Vac

### Mounting Types

#### Rear mounting

- Vandal proof mounting
- Very compact fitting

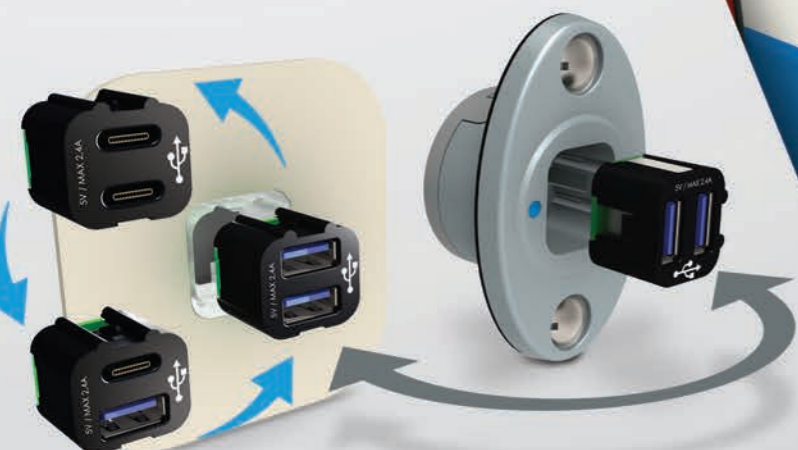


#### Front mounting

- Vandal proof mounting
- Bezel material, shape and color customization



## 1 USB TYPE A OR C PORTS INTERCHANGEABLE AFTER INSTALLATION



## 2 QUICK & EASY MAINTENANCE OF USB PORTS



### Dismounting tool kit

Ref : YST1173

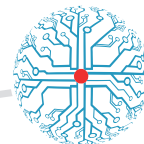


SUSTAINABLE SOLUTIONS TO MOVE PEOPLE IN A BETTER PLANET

[www.mafelec.com](http://www.mafelec.com)



471 Route de la Cuisinière - F-38 490 CHIMILIN - FRANCE  
Ph. : +33 (0)4 76 32 07 33 - Fax : +33 (0)4 76 32 54 11  
[www.mafelec.com](http://www.mafelec.com) - [contact@mafelec.fr](mailto:contact@mafelec.fr)



**MAFELEC TEAM**



**PETERCEM**

[www.petercem.com](http://www.petercem.com)



[www.comtronic-schoenau.de](http://www.comtronic-schoenau.de)



[www.fesys.fr](http://www.fesys.fr)



**STOPCIRCUIT**

[www.stopcircuit.fr](http://www.stopcircuit.fr)