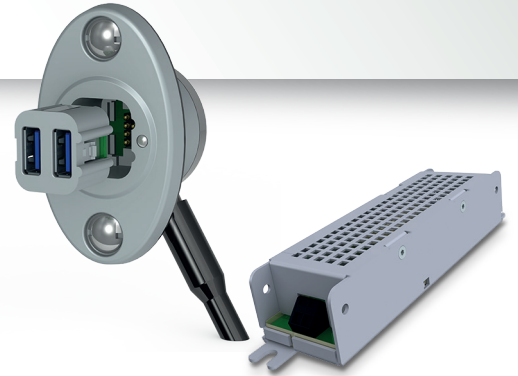


# M-USB/A : MDOOR SLIM SOCKET AND CONVERTER

## Product Configuration



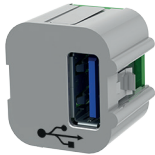
COMPANY :

PROJECT :

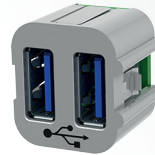
Select your activity :

Part number :

### 1 USB SOCKET CONFIGURATION

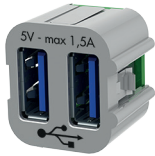


Single vertical

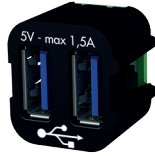


Double vertical

### 2 REMOVABLE USB SOCKET MODULE COLOR



Light Grey (RAL7040)

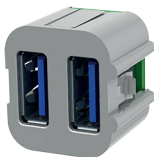


Black (RAL9005)

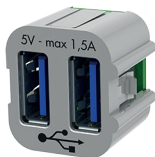
Other on request (precise your color)

### 3 MARKING INFORMATION FOR USERS

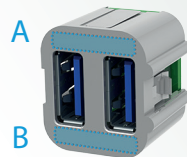
3a Information



Without marking



USB Logo  
5V - Max current



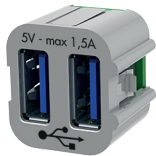
Other on request (precise your information)

ZONE A

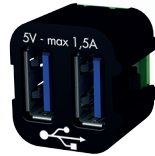
ZONE B



3b Color

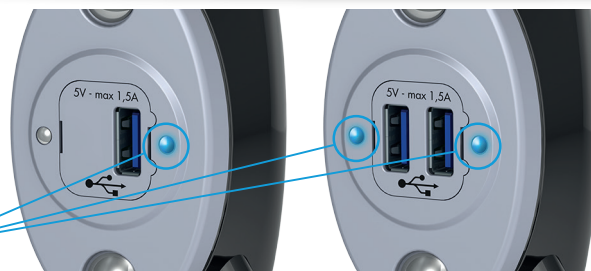


Black



White

### 4 LIGHTING



Lighting area

Blue

White

Other on request (precise your color)



## 5 MAX CURRENT PER USB PORT

0.5 A

1 A

1.5 A

2,4 A

Other on request  
(precise your current)

## 6 HOUSING COLOR



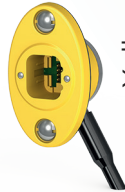
Light Grey  
(RAL7040)  
Standard



Dark Grey  
(RAL7016)



Black  
(RAL9005)



Yellow  
(RAL1018)



Green  
(RAL6024)



Blue  
(RAL5017)

## 7 CABLE ORIENTATION

Nota : EN50306-4 cable  
with a length of 100mm



Bottom/Right

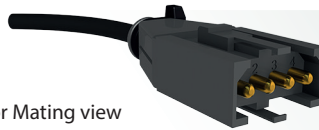


Top/Left

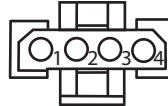
## 8 CABLE OUTPUT



Without connector  
(standard)



Connector Mating view



Pin out	
1	-Vusb/Out1
2	+Vusb/Out1
3	-Vusb/Out2
4	+Vusb/Out2

Souriau SMS

Specific connection  
(please provide a drawing  
or part number)

## 9 MOUNTING TYPE



Wall mounting



Pole Diameter 30-32mm (\*)

Pole Diameter 34-35mm (\*)

(\*) Pole adapter color



Light Grey  
(RAL7040)



Dark Grey  
(RAL7016)



Black  
(RAL9005)



Yellow  
(RAL1018)



Green  
(RAL6024)



Blue  
(RAL5017)

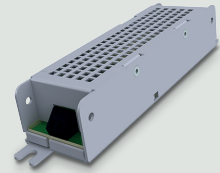
# 10

## USB-CONVERTER ELECTRICAL LAYOUT

**Harness specification :** Wire gauge 1mm<sup>2</sup> or 1.5mm<sup>2</sup>

Maximum distance between converter and the farthest USB socket :

- 3 m with wire gauge 1mm<sup>2</sup>
- 5 m with wire gauge 1.5mm<sup>2</sup>



### 6a Converter responsibility

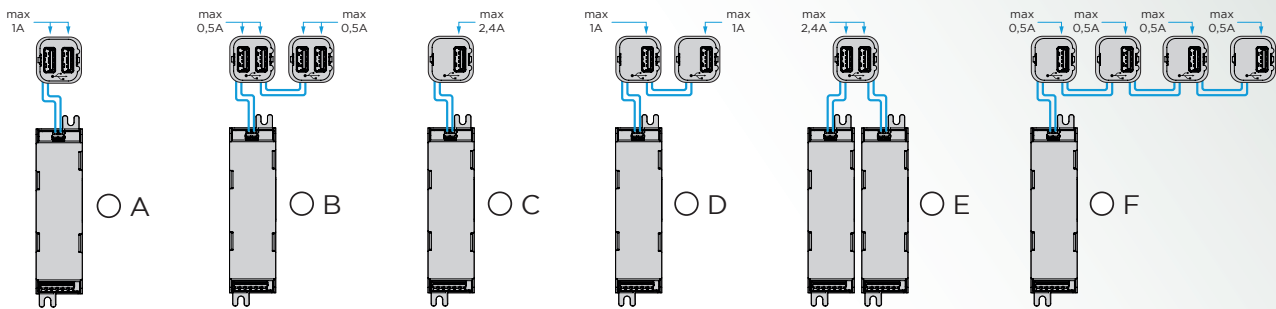
- Converter provided by Mafelec
- Converter provided by customer

(Beware : conformity with USB standards are under customer responsibility)

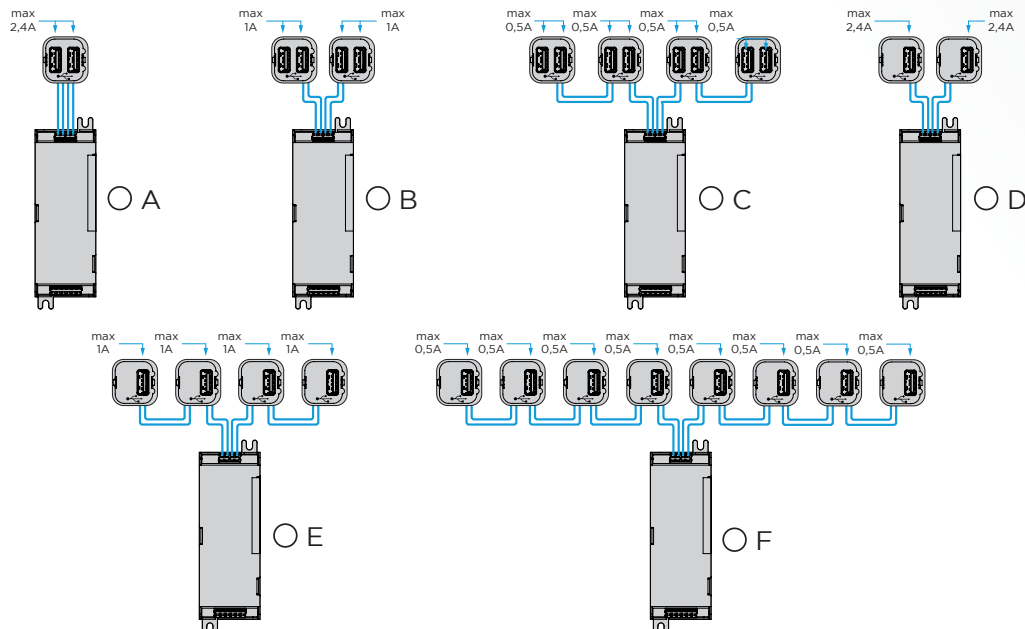
*Notes : In the case of double port USB socket selected in §1 and  
Max current >1A selected in §5, you need 1 power supply per USB port*

### 6b Converter type & configuration

- Input 100-230 VAC / 1 output 5VDC-2.4A



- Input 24-36 VDC / 2 output 5VDC-2.4A each
- Input 72-110 VDC / 2 output 5VDC-2.4A each



11

DISMOUNTING TOOL OF  
REMOVABLE USB MODULE  
*(100 operations capacity)*

REF : YST1173



12

OTHER REQUEST / COMMENT

471 Route de la Cuisinière - F-38 490 CHIMILIN - FRANCE  
Ph. : +33 (0)4 76 32 07 33 - Fax : +33 (0)4 76 32 54 11  
[www.mafelec.com](http://www.mafelec.com) - [contact@mafelec.fr](mailto:contact@mafelec.fr)

*Because of the constant evolution in standards and materials, the texts  
and images of this document do not constitute a contractual agreement.*



**MAFELEC TEAM**



March 2021