

Definition chart

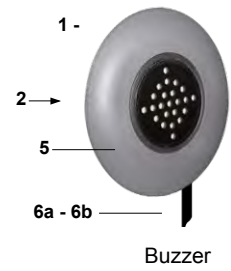
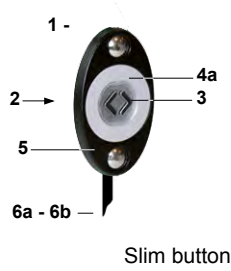
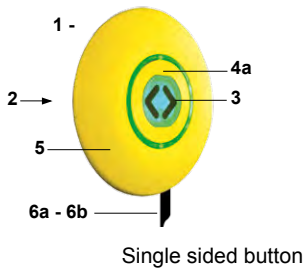
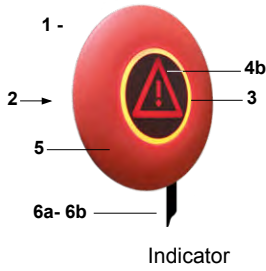
COMPANY :

Select your activity :

Project :

N° plan :

1 - M-Door product



2 - Voltage

Voltage : 12 V

24 V

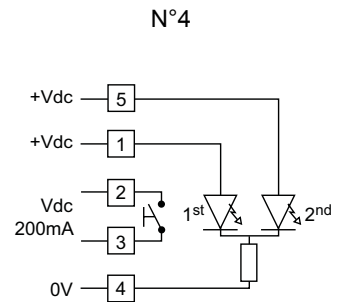
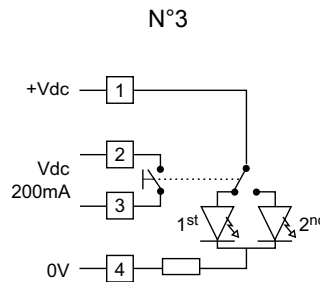
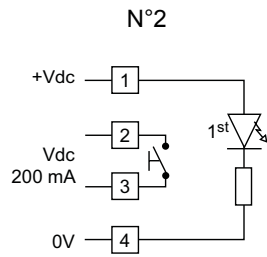
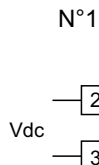
72 V

110 V

Other

3 - Electrical layout :

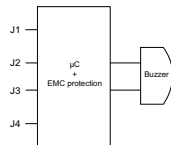
3a - For button :



Luminosity : Standard

High

3b - For buzzer :



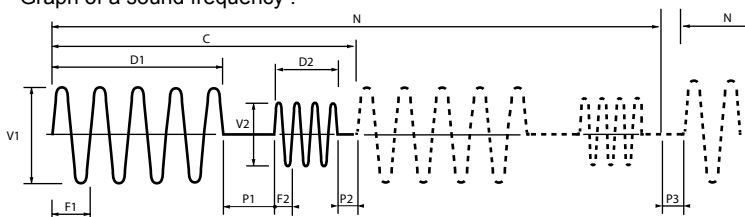
Customized configuration (table below) :

Audio sequence N°	F1 (Hz)	D1 (s)	P1 (s)*	V1	F2 (s)*	D2 (s)*	P2 (s)*	V2 *	N	P3 (s)*	J1	J2	J3	J4
	Frequency 1 350Hz ... 3000Hz	Time 1 ≥ 0.05s	Stop 1 ≥ 0.05s	Sound volume ** Low, Medium, High	Frequency 2 350Hz à 3000Hz	Time 2 ≥ 0.05s	Stop 2 ≥ 0.05s	Sound volume ** Low, Medium, High	Nber of cycles (C) 1 mini.	Stop after N ≥ 0.05s				
1											c	-	-	0V
2											-	c	-	0V
3											c	c	-	0V
4											-	-	c	0V
5											c	-	c	0V
6											-	c	-	0V
7											c	c	c	0V

* If not used keep the box free

c = connecté au + de l'alimentation
- = non connecté

Graph of a sound frequency :



** The Buzzer Mafelec delivers a sound volume of 70dB in 1.5m in the axis of the product between 1750Hz and 3000Hz.

The range of regulation of the sound volume is of 10dB

Indication of the level of sound volume:

Low Volume ≈ 60 dB in 1m

Medium Volume ≈ 65 dB in 1m

High Volume ≈ 70 dB in 1m

⚠ The obtained sound volume depends on the integration of the buzzer in its environment.

4 - LED color :

Button : 2 colors max
Indicator : 1 color

Green
1st 2nd

Red
1st 2nd

Blue
1st 2nd

None
1st 2nd

Other
1st 2nd

5a - Actuator

Only for button P/N

Material:

Plastic: Plastic flush actuator

or

Metal: Metal flush actuator With lit hole
Metal raised actuator Without lit hole

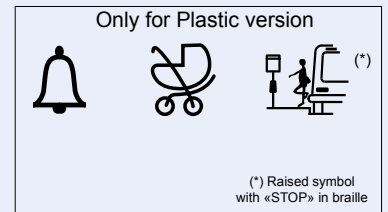
Color: Green Red Dark blue Yellow Grey light
Black White Orange Decorative chrome
(only for metal version)

Symbol: Flush symbol Raised symbol



WC

SOS



No symbol

Other symbol (please provide a drawing)

5b - Indicator

Symbol : No symbol
Other symbol (please provide a drawing)



6 - Bezel

Shape: Plastic round Plastic triangular (with SOS raised and braille)
Metal round Metal round (with 2 areas for marking) Metal square

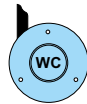
Color: Green Red Dark blue Light blue
Except for Slim button Light grey Dark grey Orange Decorative chrome
White Black Yellow (only for metal version)

Color: Green Red Orange Yellow Black
For Slim button

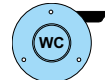
7 - Cable position

Standard length = 170 mm from back cover to the end of moulding resin

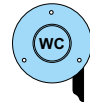
1 = 0°



2 = 90°



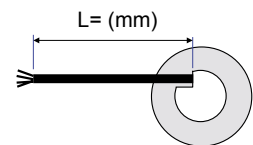
3 = 180°



Type: Halogen free (commercial vehicles & industrial) EN 50306-4 EN 50306-4 IP Protected Other cable type

Standard length: L= 130 L= 170 (standard) L= 500 L= 1000

Other: L=



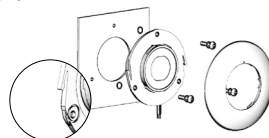
8 - Connection

Without connector (standard)	AMP Female, 4 pts ref 180901	AMP Male, 4 pts superseal ref 282106-1	Hypertac REP 606
Wago 769-104	Wago 769-102	M12	Specific connection (please provide a drawing or part number)

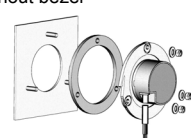
9 - Mounting

For single sided button, Indicator or buzzer :

Front mounting with bezel



Rear mounting without bezel



Nota : Slim button, front mounting only.

Other versions on request

Actuator

Some examples from our product range :



Metal flush actuator with raised symbol



Metal flush actuator for flush symbol with lit hole



Metal raised actuator for flush symbol with lit hole



Metal raised actuator with raised symbol



Metal raised actuator with raised symbol and lit hole



Plastic flush symbol



Plastic raised symbol



Plastic braille symbol

Actuator diameter : 40mm
 Raised actuator : 30mm high
 Raised symbol : 1mm high

Color

The colors are only for indication because the rendering depending on the material (metal or plastic)



Red



Orange



Yellow



Green



White



Dark blue



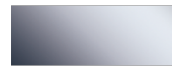
Light blue



Dark grey



Light grey



Decorative chrome
(metal version only)

Bezel



Plastic triangular shape with braille



Metal round shape with braille



Metal square shape

Dimensions (mm)

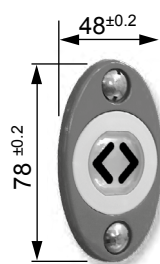
Front mounting :



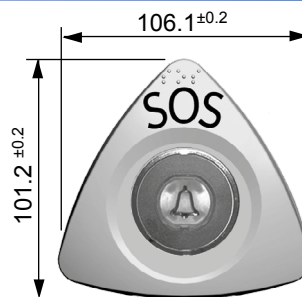
Square shape



Round shape



«Slim» shape



Triangular shape

Rear mounting :

